

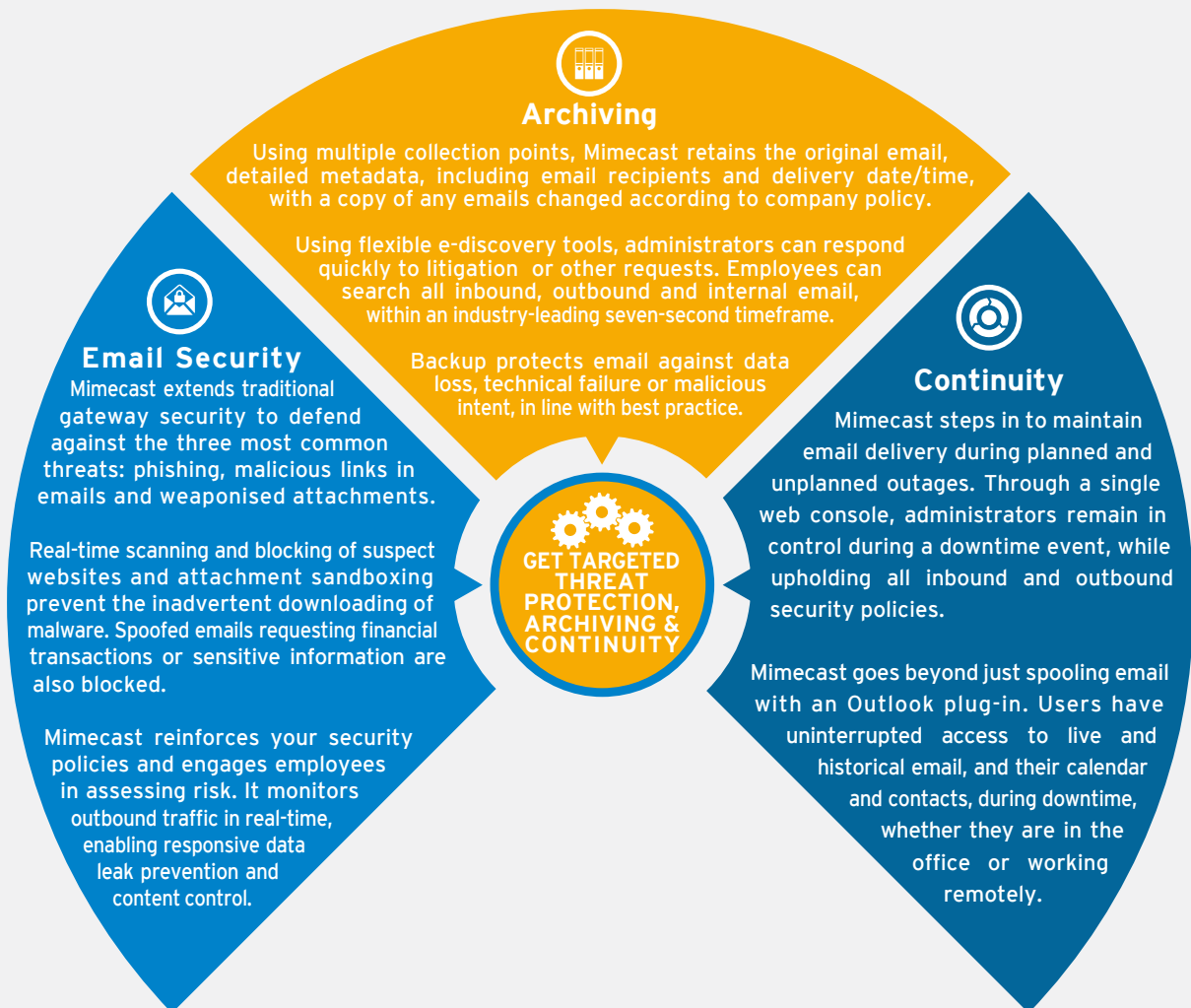
## Integrated Security, Email Continuity & Archiving with Mimecast

**Manage the risks inherent in email with targeted threat protection, archiving and continuity - all in an integrated service**

### Be cyber resilient!

With over 112 billion messages sent every day, email remains the number one form of business communication. The valuable corporate information stored in email means productivity plummets in the wake of an attack or hacking episode.

However you host email - with a cloud solution such as Office 365™, on-premise, or using a mix of both - you must secure your business and employees against malicious links, attachments and payload-less attacks. Employees need to be able to find information in their mailboxes quickly and in compliance with statutory requirements, and keep on working through planned or unplanned server outages.





## Easy Administration

Mimecast instantly reduces administration, with no on-premise equipment to maintain and a single support provider. As a SaaS solution, the platform is the perfect complement to cloud-hosted or on-premise email solutions.

Administrators gain fine-grained control: their web console integrates all services, including advanced inbound routing for hybrid and complex environments, and creates a real-time view of all SMTP connections and rejections.

With dashboards and rich reporting, administrators can quickly zero in on issues and modify policies to stay ahead of potential risks.



Once it was deployed, the system detected the next attempted whaling attack by recognizing the Managing Directors name and other keywords in the message... The best thing is that you configure just one policy and it's working.

–Athona Recruitment



Mimecast has been very well received and continues to protect the group from whaling and phishing through to countless virus attacks quietly in the background without anyone knowing the system is running.

–The SR Group



## Add-ons include

- **Secure messaging:** Share sensitive information without the need for additional hardware and software for either sender or recipient
- **Large file send:** Send and receive large files up to 2GB
- **Legacy archive data management:** Rapidly search legacy email, mailbox and PST data in a single integrated cloud archive



## Key benefits

- Comprehensive email security, including protection from malware-less social engineering attacks, weaponised attachments and malicious URLs
- Highly secure and resilient permanent email archive – offsite and cloud-based
- Continuity service with RPO/RTO close to zero and 100% availability
- Full email and attachment scanning to control or block the sending of sensitive information
- All features managed through a single web-based console
- Mimecast plug-in for Outlook™ and apps available for iOS™, Android™, Windows Phone and BlackBerry mobile devices

Contact us for improved email continuity & security

0808 129 22 99 | [hello@tdmgroup.net](mailto:hello@tdmgroup.net) | [www.tdmgroup.net](http://www.tdmgroup.net)

